



CYBERBULLYING, DIGITAL DRAMA & HATE SPEECH

We are kind & courageous.

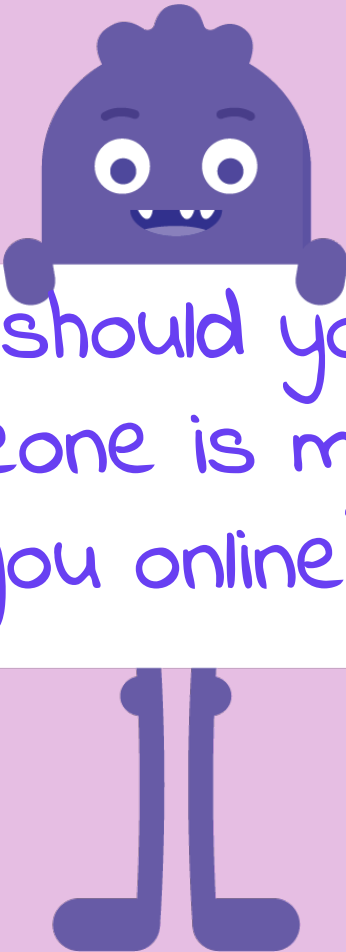
DIGITAL CITIZENSHIP | GRADE 2

Putting a STOP to Online Meanness

 **common sense** education®

BE KIND





what should you do
if someone is mean to
you online?



WARM UP

What does mean behavior look like?



commonsense.org/education

Shareable with attribution for noncommercial use. Remixing is permitted.

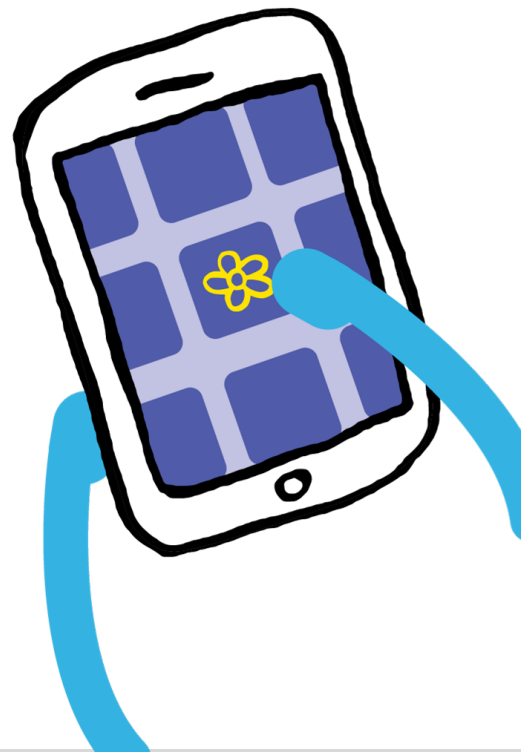


common sense education®



On line

Using a computer, phone, or tablet to visit a website or app





Why do you think someone would be mean to someone else online?





Hey! Have you seen that new show, Fly Sweepers!



It's so cool!



I can't believe you like superhero shows.

That's something my little brother would watch!



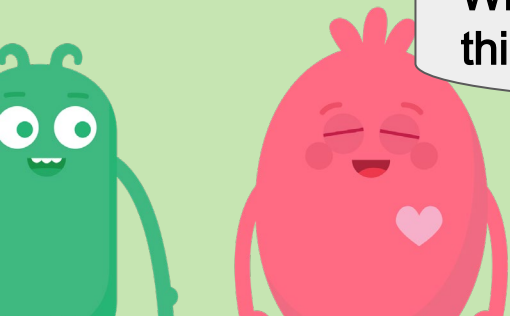


Face-to-Face

Online

Discuss the difference between talking to a friend face to face vs. online.

Which version do you think people are nicer? Why do you think that is?



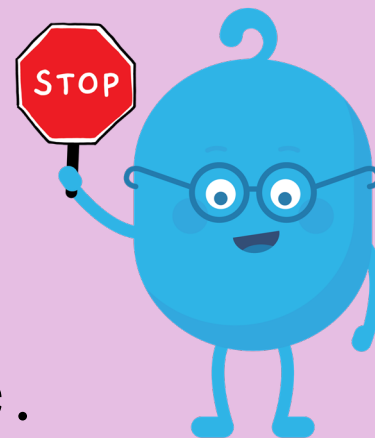


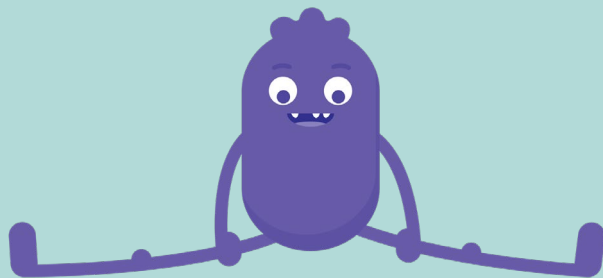
Scenario

Legs' parents let her play on a website where she can take care of a pet pony and decorate its stall. One day, Legs was playing on her friend Michael's device and accidentally forgot to sign out before she left. The next day, Legs went to the site to care for her pony and found the pony's stall was a mess and that there were some things missing.



- ✓ Step away.
- ✓ Tell a trusted adult.
- ✓ OK sites first.
- ✓ Pause and think online.





Pause & Think Moment

Discuss what you should do if you experience someone being mean to you online.



We are kind
& courageous.

